

Kentucky FirstNet - SLIGP Project



Kentucky State Police

The KSP Team

Derek

Derek Nesselrode

Statewide Interoperability Coordinator



Barry Sanford

Special Projects Manager

Misty Moore

Resource Management Analyst

The Project Team

The Baker logo consists of the word "Baker" in white, bold, sans-serif font, centered within a solid blue rectangular box.

J.B. Williams

Vice President / Regional Manager
Michael Baker Jr., Inc.

Bob Lois

Project Manager
Michael Baker Jr. Inc.

Bill Bates

Technical Specialist
Michael Baker Jr. Inc.

Dominick Arcuri

Project Manager
RCC Consultants, Inc.

James Price

Technical Specialist
RCC Consultants, Inc.



Meeting Agenda

- 1. Introductions**
- 2. FirstNet / SLIGP Overview**
- 3. Kentucky Project Summary & Timeline**
- 4. Kentucky Project - Next Steps**
- 5. Work Group Questions and Input**



A large, light blue, stylized graphic of a horse's head in profile, facing right, serves as a background for the title. The horse's mane and tail are depicted with flowing, flame-like shapes. The entire graphic is set against a white background with a light blue border at the top and bottom.

FirstNet / SLIGP Overview

Historic Legislation for Public Safety

On February 22, 2012, the President signed into law HR 3630, “The Middle Class Tax Relief and Job Creation Act of 2012,” which includes Title VI: “Public Safety Communications and Electromagnetic Spectrum Auctions”



Broad Scope of Title VI --

- Created the First Responder Network Authority (FirstNet) in NTIA to Administer the PS BB Network
- D Block spectrum reallocated to PS
- \$7B for design of Nationwide BB Network
 - Permanent funding to come from network user fees and lease fees
- **\$135M for planning and implementation grants**
- \$100M + 200M* for NTIA research and development
- \$115M for Next Generation 9-1-1 Grants



Title VI Established PSBN Expectations --

- Under the Act, a separate and distinct PSBN would be designed and developed principally for public safety use.
- The PSBN would be a single interoperable network by itself and not a network of networks
- The PSBN would be designed with broad input from public safety agencies at the state, territory, county, municipal, and tribal levels



FirstNet Duties & Responsibilities

- Develop and implement a nationwide system configuration
- Consider state, tribal, and local agencies' needs regarding:
 - ✓ Construction of the network build out, placement of towers and coverage areas,
 - ✓ Assignment of priority to system users,
 - ✓ Training needs of local users
- Issue system construction RFP's
- Ensure the ongoing maintenance, operation and improvement of the network



The Network --

The new Public Safety Broadband Network (PSBN) will:

- ✓ Be based on new commercial standards (LTE)
- ✓ It *DOES NOT* replace current MR system anytime soon
- ✓ Include national & regional data centers (Cores)
- ✓ Include a Radio Access Network (RAN) and backhaul
- ✓ Be constructed, managed, maintained and operated taking into account the plans developed in the State, local, and tribal planning and implementation grant program
- ✓ Leverage existing commercial wireless infrastructure
- ✓ Be integrated with PSAP's



SLIGP Assessment --

The Baker/RCC Team will work with KSP and the first responder stakeholder community to ensure SLIGP project results meet the Commonwealth's public safety needs:

- ✓ Make sure SLIGP work will adequately prepare KY for consultation with FirstNet;
- ✓ Provide effective consultation with KSP to explain to the FirstNet Authority the needs of the Commonwealth in relation to the PSBN
- ✓ When FirstNet Authority presents a RAN design, Kentucky must be able to determine whether that design meets their needs
- ✓ If the RAN offered by FirstNet does not meet Kentucky's needs, be prepared to take action to assure the availability of effective public safety broadband capability

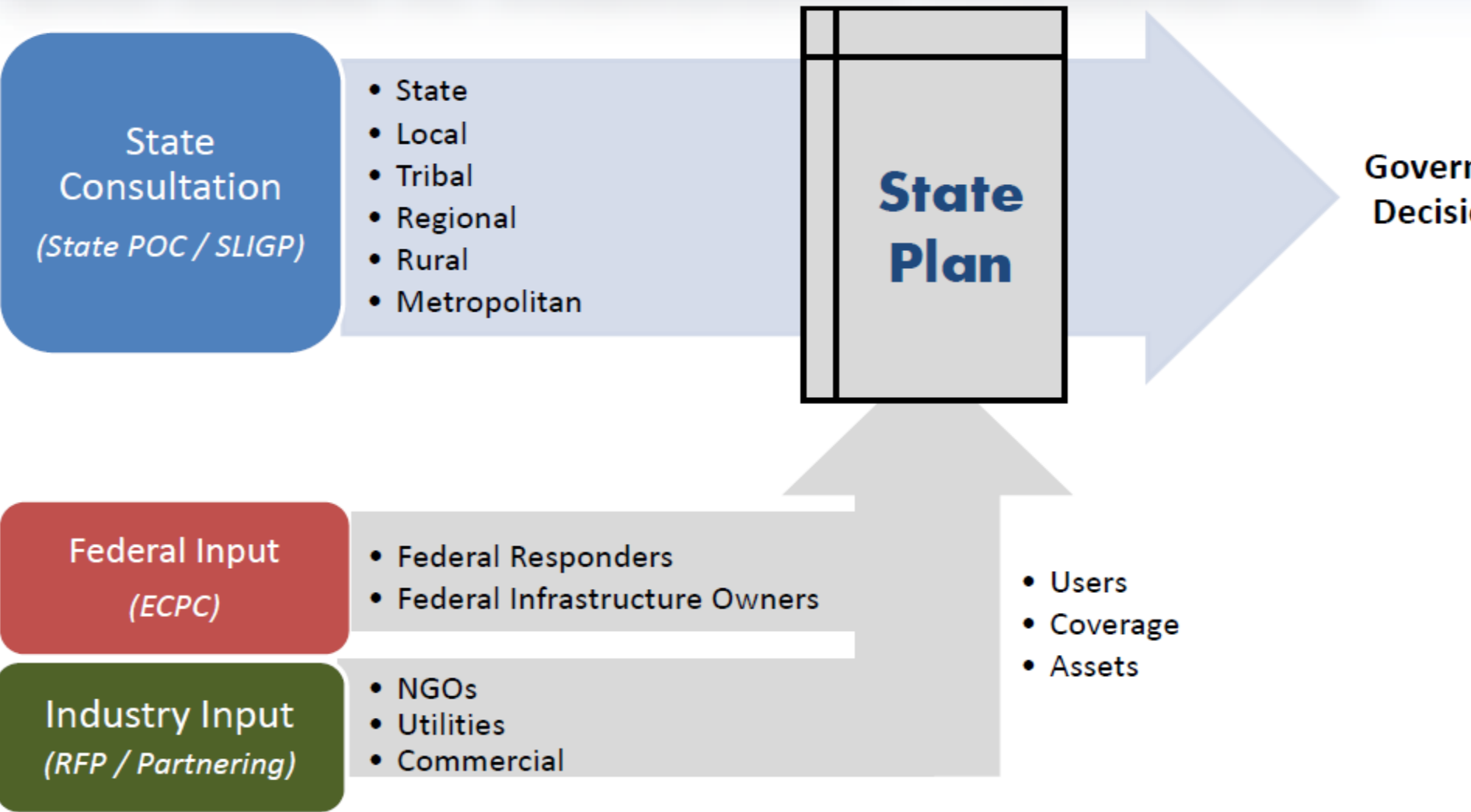


Recommended Process for a Broadband Needs Assessment --

- Thoroughly identify and include First Responder needs and requirements;
- Public Safety stakeholders should participate in the planning, usage and needs identification;
- During the process, consider capacity requirements by incident type, by area, and how it will impact backhaul needs.



WIDE RANGE OF STAKEHOLDER CONSULTATION



OVERVIEW OF CONSULTATION PROCESS

- **Consultation is an active process, not a single event.** FirstNet will collaborate and partner with stakeholders in a meaningful consultation process.
- **FirstNet will communicate the consultation process and necessary roles and responsibilities.** It will be clear to the stakeholders what the process is and what the expectations are for those involved.
- **Consultation will focus only on critical information and data.** FirstNet will focus on gathering only absolutely necessary data to help build the network.
- **Plan development will be iterative.** Stakeholders and FirstNet will have the opportunity to refine information and improve drafts.
- **Consultation culminates with the creation of the State Plan.** State Plans will be created with the information gathered during the consultation process.

Together, Stakeholders and FirstNet will have engaged in a process that provides meaningful and thorough information for the State Plans.

SLIGP -- Needs Assessment & LTE Traffic Definition

- List of applications by department

- Identify usage patterns by department geographically throughout the Commonwealth

- List of incident types
 - Number/mix of resources by incident type
 - Application usage patterns by resource during an event
 - Map incident types and frequency on a statewide basis.



The SLIGP Decision Process...



- Upon completing an RFP process, the FirstNet Authority will provide KY:
 - Details of its proposed portion of the FirstNet build out plan, and
 - The Kentucky build out funding as determined by NTIA
- States have 90 days to determine if the FirstNet offer meets its public safety needs and decide whether to accept the FirstNet offer or to opt-out and develop its own network

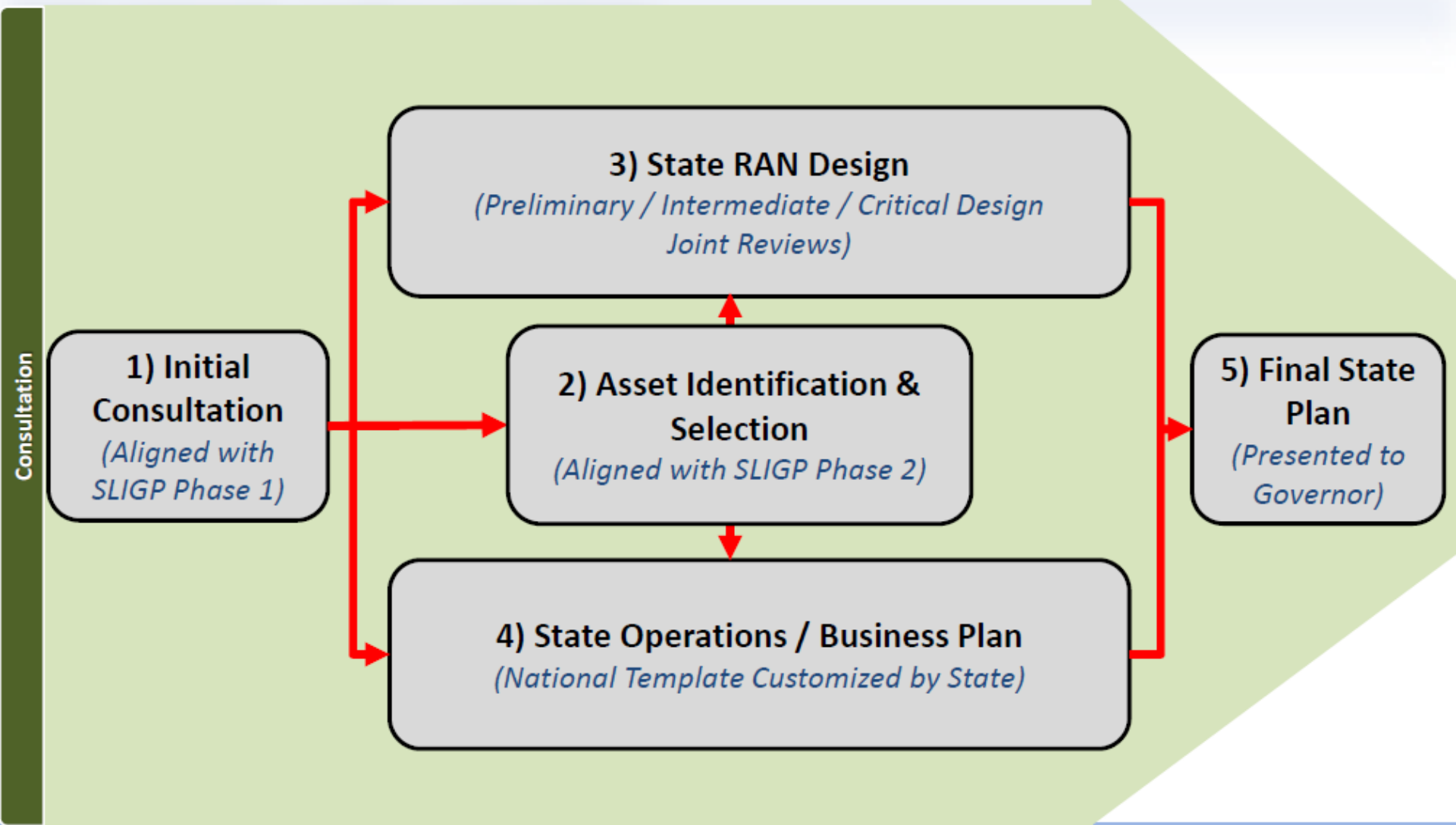
(States can still apply for grant funding and to lease needed spectrum)

Kentucky Project -- Summary & Timeline

Timeline --

ID	Task Name	Duration	Start	Finish	Oct	Dec
1	Task 1: Mobilization	30 days	Mon 1/6/14	Mon 2/17/14		
6	Task 2: PSBN Strategy and Methodology	23 days	Wed 1/15/14	Fri 2/14/14		
17	Task 3: Stakeholder Entity List, ID Potential Users	280 days	Mon 1/6/14	Fri 1/30/15		
27	Task 4: Governance Structure	19 days	Tue 2/4/14	Fri 2/28/14		
34	Task 5: Evaluate/Update Existing PSBN-SLIGP Doc	15 days	Mon 2/17/14	Fri 3/7/14		
42	Task 6: Outreach and Education	420 days?	Mon 2/17/14	Fri 9/25/15		
56	Task 7: SCIP Update	270 days	Mon 9/22/14	Fri 10/2/15		
63	Task 8: Develop Standard Legal Documents	70 days	Mon 2/2/15	Fri 5/8/15		
72	Task 9: Stakeholder Entity Requirements Gathering	140 days	Mon 2/2/15	Mon 8/17/15		
82	Task 10: Discovery and Data Collection	99 days	Mon 8/17/15	Thu 12/31/15		
90	Task 11: State and Constituent PSA Business Plans	21 days	Fri 1/1/16	Fri 1/29/16		
94	Task 12: FirstNet Negotiation Consultation	87 days	Mon 2/1/16	Tue 5/31/16		

DEFINING THE PROCESS



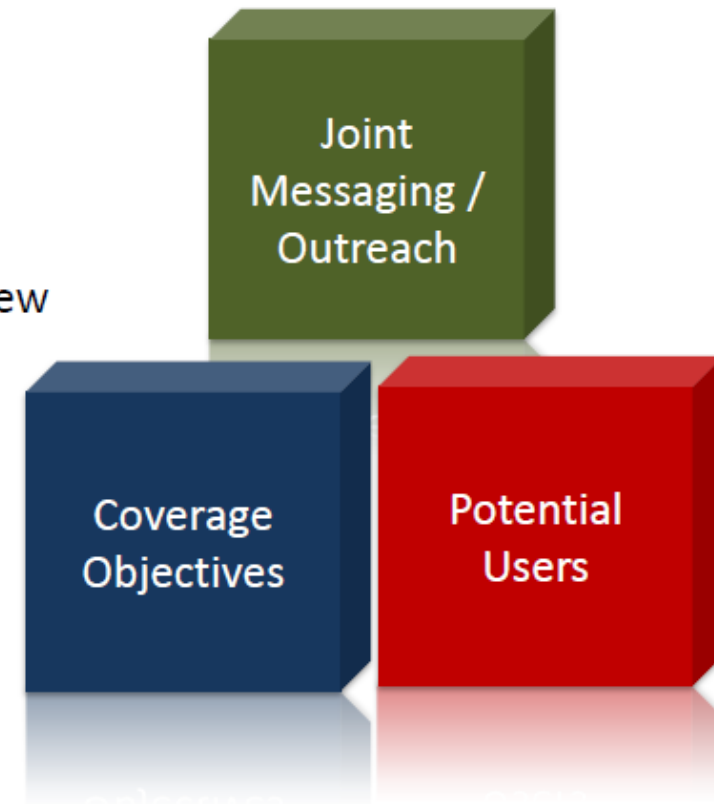
1 - INITIAL CONSULTATION *(Aligned with SLIGP Phase 1)*

Key Steps

- Define consultation process & roles / responsibilities
- Discuss Baseline State Analysis (BSA) with each State / Territory
- States validate / improve BSA coverage objectives and detailed user information
- Upon completion by State, hold on-site meeting to review state analysis and discuss joint education / outreach

Guiding Principle

- Coverage objectives and user information is critical to support the State RAN design efforts
- All States may begin process concurrently
- Ask States to validate & enhance rather than recreate
- Address plan for joint messaging / outreach process and materials to stakeholders at all levels



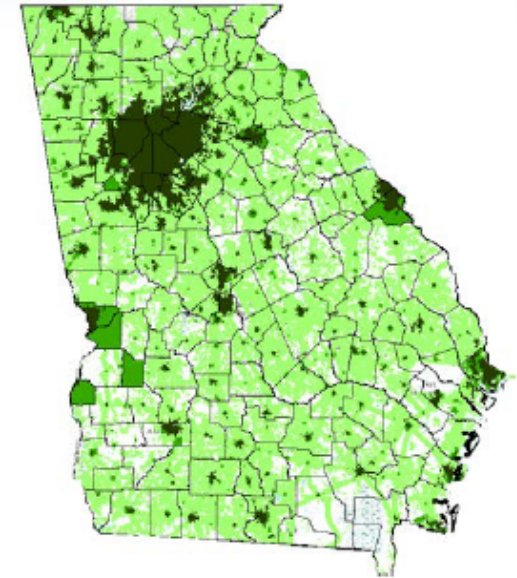
IDENTIFYING POTENTIAL USERS

- FirstNet will provide User baseline data (as available) for primary responders in each State to include:
 - Number of agencies by discipline
 - Number of personnel by discipline
 - Detailed agency user database
- FirstNet will also provide potential categories of secondary responders for consideration by the State with guidance provided from PSAC
- States will provide updated data on primary responders and estimated user counts for secondary responder groups whom they believe should be eligible users on the network
- Parallel effort will occur with Federal agencies through Federal Outreach via ECPC
- Voluntary OEC workshops will provide this baseline data as part of the delivery.
- Data will be used to support subsequent data collection during SLIGP phase 2, as well as inform capacity planning



DEFINING COVERAGE OBJECTIVES

- FirstNet will provide a GIS map showing proposed coverage objectives in four major categories:
 - In Building
 - Handheld / Partial In-Building
 - Vehicular Modem / Partial Handheld
 - Satellite / Deployable
- States will provide updated coverage objectives through an updated GIS file
- States will be encouraged to gather input from all, local, state, and tribal agencies
- Voluntary OEC Coverage Workshops can help states get an early start and better understand this process
- Coverage objectives will be used to focus subsequent SLIGP Phase 2 data collection
- Parallel effort will occur with Federal agencies through federal outreach via ECPC



Coverage Baseline Example

- In-Building
- Handheld/Partial In-Building
- Vehicular Modem/ Partial handheld
- Satellite/Deployable

GEOGRAPHIC COVERAGE PRIORITY

Multiple network coverage solutions operating across 5 distinct geographic categories

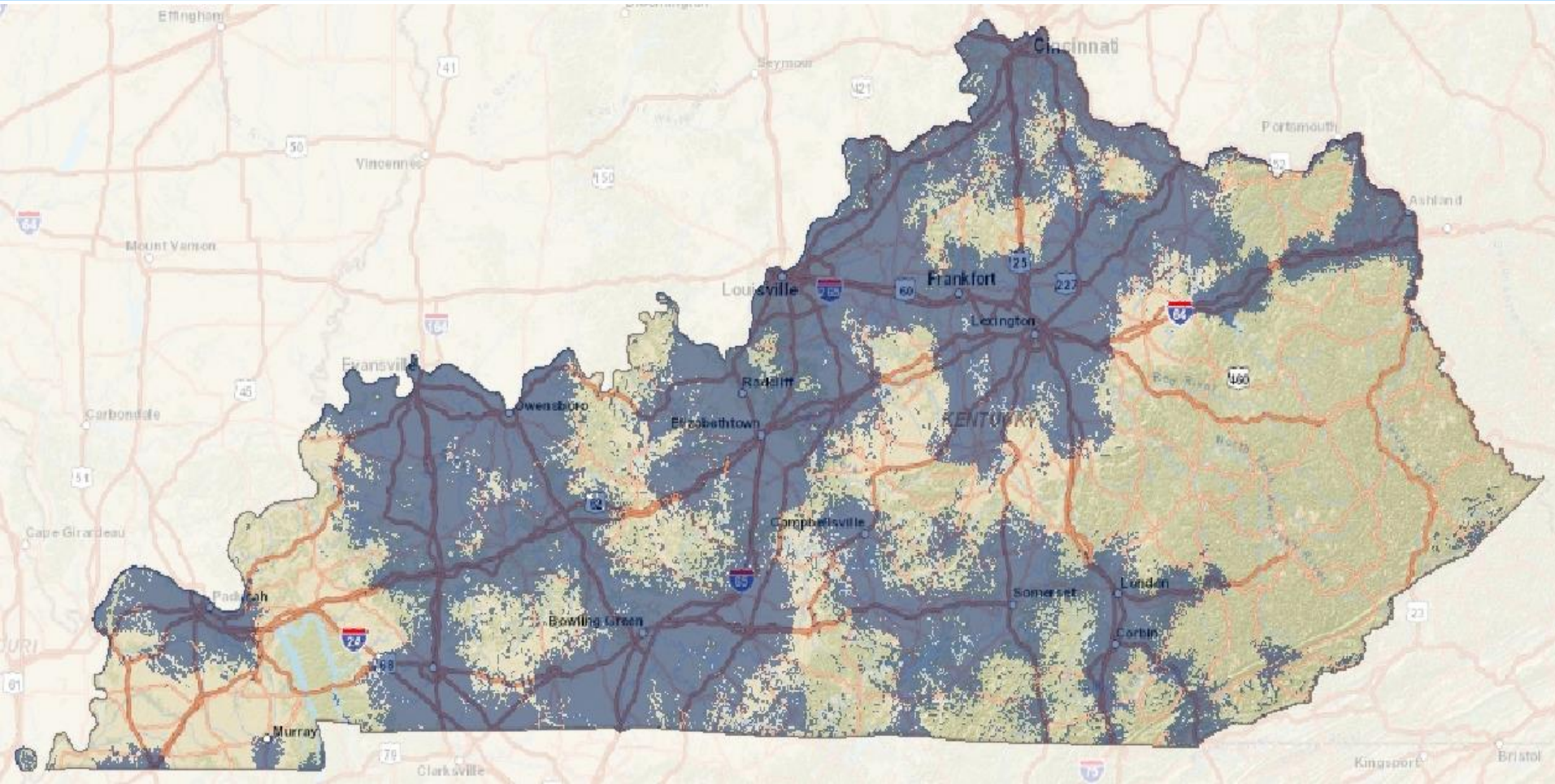


Wilderness
27% of U.S. Land Mass

Rural
68% of U.S. Land Mass

Suburban **Urban** **Dense Urban**
5% of U.S. Land Mass

Commercial LTE Coverage --



2 - ASSET IDENTIFICATION & SELECTION

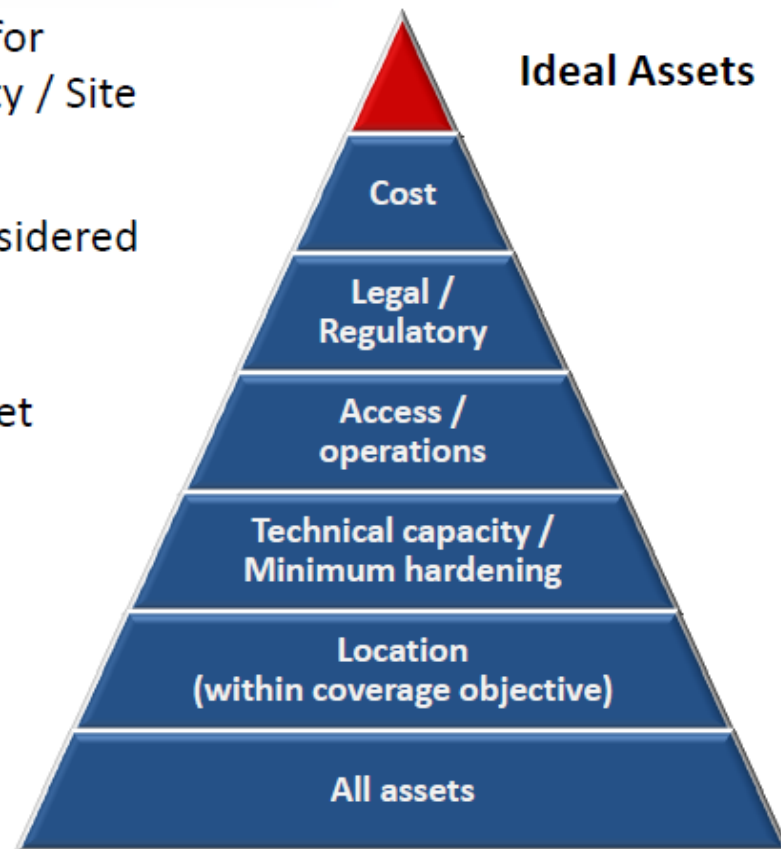
(Aligned with SLIGP Phase 2)

Key Steps

- Define minimum recommended attributes of assets for consideration (Coverage objective / Technical capacity / Site access / Operations / Low cost)
- Request data collection on available assets to be considered
- Assess all assets (commercial & public)
- Select assets based solely on best value to the FirstNet network

Guiding Principle

- Limit data collection to viable assets to save the State time/effort
- Leverage assets to provide better coverage at a lower cost
- Leverage assets to deploy quicker



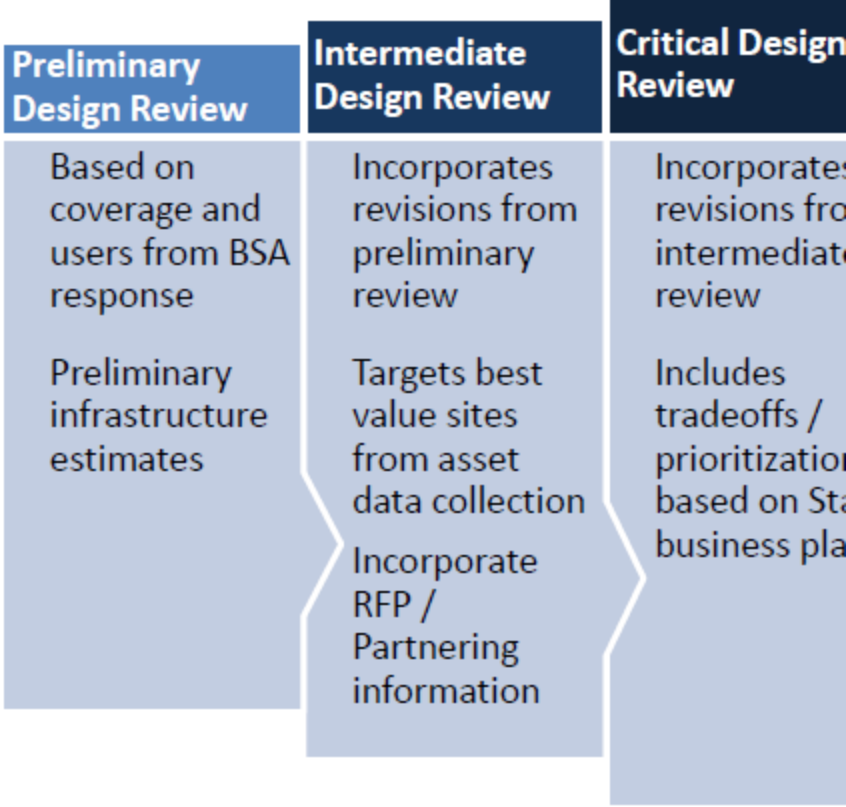
3 - STATE RAN DESIGN PROCESS

Key Steps

- Multi-phase (preliminary / intermediate / critical design reviews) review with State to refine design based on identified priorities
- Incorporate feedback and additional data as it is collected (SLIGP Phase 2 / RFP Process)

Guiding Principle

- Ensures on-going review / refinement process with State
- Jointly develop tradeoffs and priorities



4 - STATE OPERATIONS / BUSINESS PLAN

Key Steps

- Leverage PSAC and others to discuss overall approach to:
 - Local control
 - Prioritization
 - Training
 - Security
- Develop operations template with areas for input/customization
- Develop system cost structure / business plan for State based on preliminary RAN design and potential user base
- Customize based on public safety stakeholder input

Guiding Principle

- Addresses areas of consultation required by law
- Ensure State RAN design is informed by impact to business | cost considerations



5 - FINAL STATE PLAN REVIEW

Key Steps

- Combine State RAN Design with Operations / Business Plan
- Projected funding level
- Provide final review opportunity by State POC / Governing Body
- Submit to the Governor

Guiding Principle

- Addresses areas of consultation required by law
- Ensures Public Safety stakeholders have had robust involvement before State Plan is presented

State Plan Requirements

- Completion of the RFP process
- Details of proposed build-out in the State
- Funding level for the State





Kentucky Project - *Next Steps*

SLIGP Phase I --

- ✓ Mobilize and Develop a Project Plan
- ✓ Develop the Commonwealth PSBN Strategy
- ✓ Stakeholder Entity List; Identify Potential Users
- ✓ Review Current Information on Governance Structure
- ✓ Preparations for Outreach and Education In Commonwealth
- ✓ Conduct Spring and Fall Outreach & Education Sessions 2014
- ✓ SCIP Review and Update

- FirstNet Outreach & Education -



DIVISION OF EMERGENCY MANAGEMENT EMERGENCY OPERATIONS CENTER 100 MINUTEMAN DRIVE FRANKFORT, KY 40601-6168 COMMONWEALTH OF KENTUCKY DEPARTMENT OF MILITARY AFFAIRS

Michael Jones
Acting Director
Off. -502-607-1447
FAX -502-607-1240

Charles M. O'Neal
Assistant Director-Ops
Off. -502-607-1601
Off. -502-607-1638
FAX -502-607-1622

Stephanie Robey
Assistant Director-Admin
Off. -502-607-1601
BB. -502-545-8271
FAX -502-607-5740

Region 2
OWENSBORO OFFICE-13 COUNTIES
Patrick Hardesty, RRM (43)
Emergency Management
Coordination Center
3300 Tamarack Road, Suite C204
Owensboro, KY 42301
patrick.hardesty2.nfg@mail.mil
ADMIN: Sherion Roberts
OFFICE: 270-689-3730 ext. 3237
OFFICE: 502-607-3261
OFFICE: 502-607-3237
MOBILE: 270-498-6580
FAX: 502-607-3235

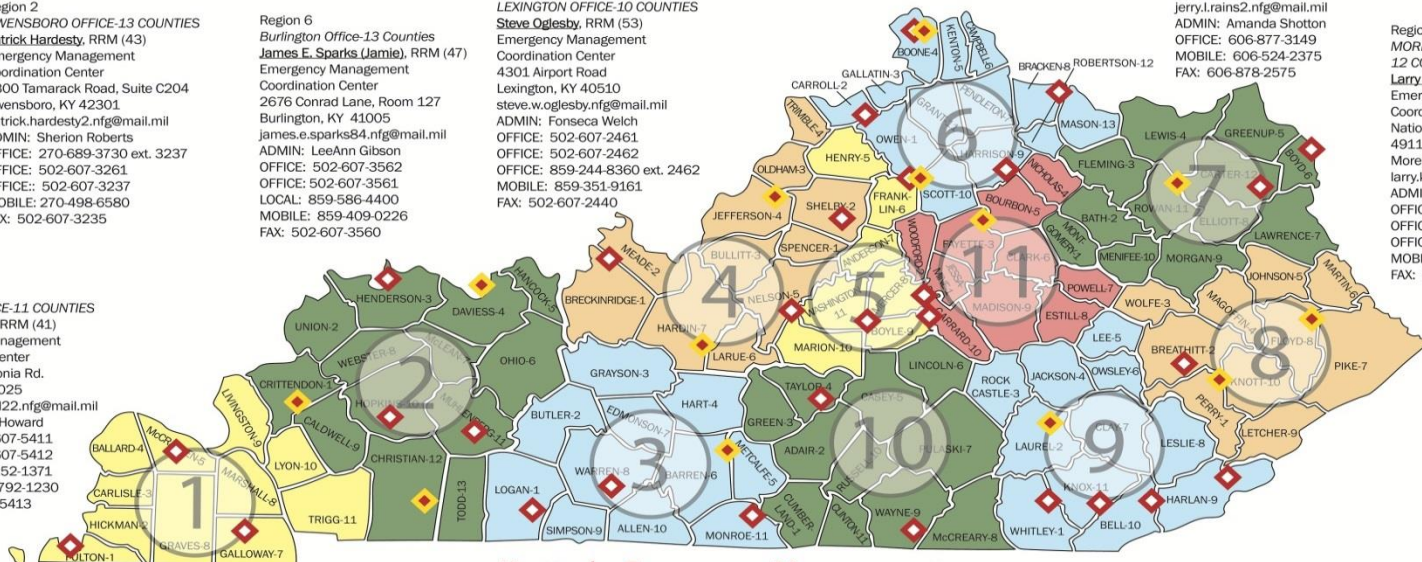
Region 6
Burlington Office-13 Counties
James E. Sparks (Jamie), RRM (47)
Emergency Management
Coordination Center
2676 Conrad Lane, Room 127
Burlington, KY 41005
james.e.sparks84.nfg@mail.mil
ADMIN: LeeAnn Gibson
OFFICE: 502-607-3562
OFFICE: 502-607-3561
LOCAL: 859-586-4400
MOBILE: 859-409-0226
FAX: 502-607-3560

Region 11
LEXINGTON OFFICE-10 COUNTIES
Steve Oglesby, RRM (53)
Emergency Management
Coordination Center
4301 Airport Road
Lexington, KY 40510
steve.w.oglesby.nfg@mail.mil
ADMIN: Fonseca Welch
OFFICE: 502-607-2461
OFFICE: 502-607-2462
OFFICE: 859-244-8360 ext. 2462
MOBILE: 859-351-9161
FAX: 502-607-2440

Region 9
LONDON OFFICE - 11 COUNTIES
Jerry Rains, RRM (51)
Emergency Management
Coordination Center
165 Substation Street, Suite 2
London, KY 40741
jerry.rains2.nfg@mail.mil
ADMIN: Amanda Shotton
OFFICE: 606-877-3149
MOBILE: 606-524-2375
FAX: 606-878-2575

Region 7
MOREHEAD OFFICE-12 COUNTIES
Larry Dixon, RRM (48)
Emergency Management
Coordination Center
National Guard Armory, Suite 101
4911 Hwy 801 North
Morehead, KY 40351
larry.k.dixon.nfg@mail.mil
ADMIN: Sherry Jenkins
OFFICE: 502-607-3391
OFFICE: 502-607-3325
OFFICE: 502-607-3326
MOBILE: 606-782-0784
FAX: 502-607-3351

Region 1
BENTON OFFICE-11 COUNTIES
Mark Garland, RRM (41)
Emergency Management
Coordination Center
453 Old Symsonia Rd.
Benton, KY 42025
mark.a.garland22.nfg@mail.mil
ADMIN: Dana Howard
OFFICE: 502-607-5411
OFFICE: 502-607-5412
OFFICE: 270-252-1371
MOBILE: 270-792-1230
FAX: 502-607-5413



Region 5
FRANKFORT OFFICE-7 COUNTIES
Vicki Martin, RRM (54)
Emergency Management
Coordination Center
100 Minuteman Parkway
Rooms 115 & 116
Frankfort, KY 40601
vicki.l.martin.12.nfg@mail.mil
ADMIN: Karen Ashby
OFFICE: 502-607-5744
OFFICE: 502-607-1658
MOBILE: 502-330-4153
FAX: 502-607-1622

Kentucky Emergency Management Response and Administrative Regions



Region 3
GLASGOW OFFICE-11 COUNTIES
Gary Fancher, Manager, RRM (44)
Emergency Management
Coordination Center
410 Cavalry Road
Glasgow, KY 42141-5014
gary.a.fancher.nfg@mail.mil
ADMIN: Rhonda Green
OFFICE: 502-607-2309
OFFICE: 502-607-2308
OFFICE: 270-659-3400 ext 2308
MOBILE: 270-779-0773
FAX: 502-607-2310

Region 10
SOMERSET OFFICE - 11 COUNTIES
Don Franklin, RRM (52)
Emergency Management
Coordination Center
109 Grande Avenue
Somerset, KY 42501
donald.r.franklin30nfg@mail.mil
ADMIN: Denise Ludwig
OFFICE: 502-607-1656
OFFICE: 606-677-0528
MOBILE: 606-219-5374
FAX: 606-677-0537

Region 4
LOUISVILLE OFFICE-11 COUNTIES
Richard Bobo, RRM (46)
Emergency Management
Coordination Center
Fairgrounds National Guard Armory
2729 Crittendon Drive
Louisville, KY 40209-1199
richard.a.bobojr.nfg@mail.mil
ADMIN: Barbara Hundley
OFFICE: 502-607-2671
OFFICE: 502-607-2693
MOBILE: 502-445-3104
FAX: 502-607-2646

Region 8
HAZARD OFFICE - 10 COUNTIES
Chris Hecker, RRM (50)
Emergency Management
Coordination Center
728 Dawahare Drive
Hazard, KY 41702-9420
chris.d.hecker.nfg@mail.mil
ADMIN: David Akers
OFFICE: 502-607-1654
OFFICE: 606-435-6012
MOBILE: 606-434-7325
FAX: 606-435-6130

Questions and Input